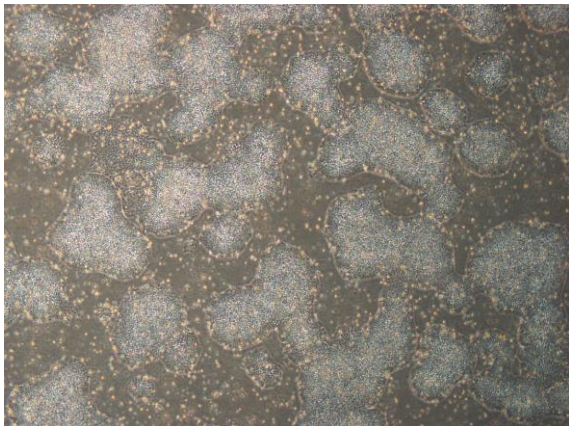
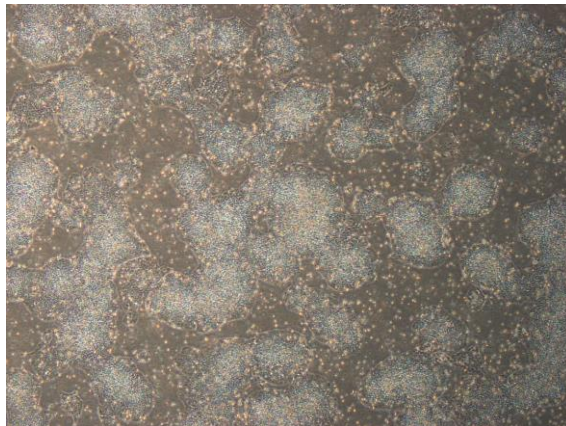


【 CiRA-j-1579 】 Morphology of iPSC colonies

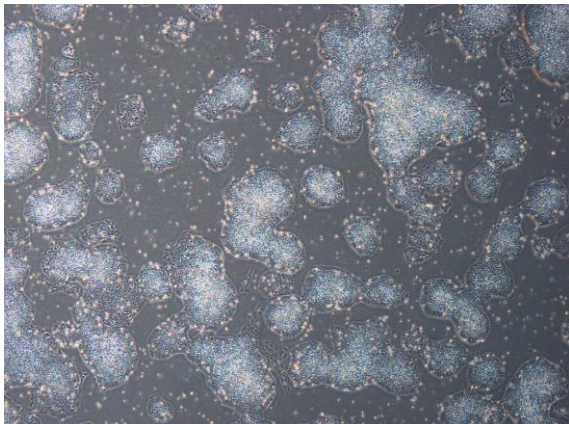
CiRA-j-1579-A: passage-3



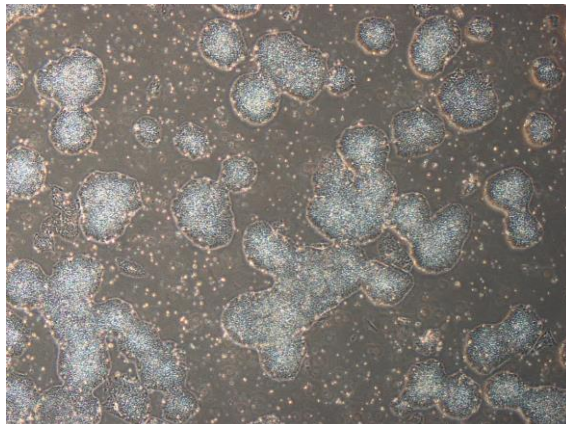
CiRA-j-1579-B: passage-3



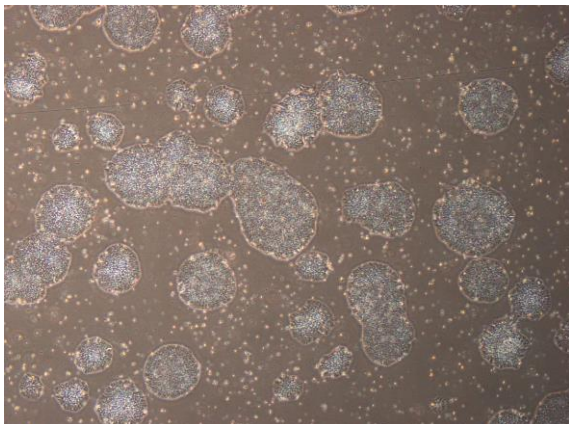
CiRA-j-1579-C: passage-3



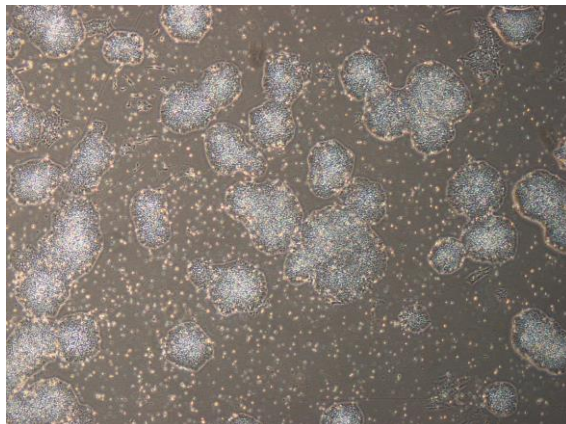
CiRA-j-1579-D: passage-3



CiRA-j-1579-E: passage-3



CiRA-j-1579-F: passage-3



(All images were captured at 4x magnification)